

Our Company

- Over 450 years of combined experience in Power & Process facilities including Project Management, Engineering, Construction, Start-up/Commissioning, Operations and Maintenance, Centerline Erection, and Outage Services
- Worked on over 300 generation assets in more than 40 different countries in the capacities of: "Owner", "Operator", "Original Equipment Manufacturers", "Third Party Service Provider", "Architect/Engineering/Construction Firms"
- Currently supporting domestic and international projects for Architect-Engineering Firms, Construction Companies, Original Equipment Manufacturer's, and Utilities



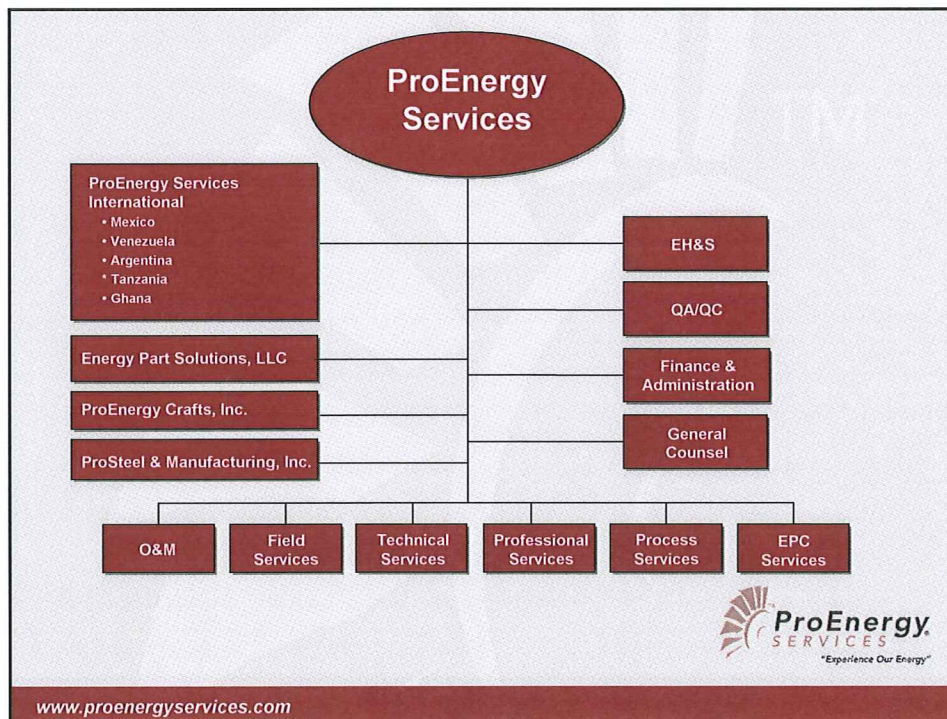
www.proenergyservices.com

Through our eight business units...

- Professional Services, Technical Services, Operation and Maintenance, Field Services, Process Services, Fabrication Services, EPC and Parts all operate with the ideal that our customers come first. We're not just another "contractor." We align ourselves with our customers and strategically design programs to meet their goals and objectives. No matter the project, location or problem, we will do what it takes to live up to the reputation we have built since our founding.



www.proenergyservices.com



Office Locations



www.proenergyservices.com

United States

- ProEnergy Headquarters – Sedalia, Missouri

- 2031 Adams Road
Sedalia, MO 65301
660.829.5100

- Atlanta, Georgia

- 1395 S. Marietta Pkwy SE
Bldg 300, Suite 218
Marietta, GA 30067
678.594.0991

- Houston, Texas

- 616 FM1960 West
Suite 750
Houston, TX 77090
281.580.2111



★ Return to map



www.proenergyservices.com

ProEnergy Headquarters



www.proenergyservices.com

Turbine Shop Under Construction



www.proenergyservices.com

Argentina

- ProEnergy Services de Argentina
 - Esmeralda 847 Piso 14D
(1007) Ciudad de Buenos Aires
Argentina

★ Return to map



www.proenergyservices.com

Professional Services

- OUR Professional Services Group provides technical specialist and project management personnel to our industry clients, through all phases of a project including:
 - Development
 - Engineering
 - Construction
 - Commissioning
 - Operations & Maintenance
- All consultants provided to OUR clients are thoroughly screened and interviewed to assure top quality staff augmentation is available for project execution.



www.proenergyservices.com

Professional Services Experience



Site Name: Invin – 4 sites
Scope: QA/QC, Project Management, Construction Management, Field Engineers



Site Name: Termozulia
Scope: Shift Supervisors



Site Name: Kuwait
Scope: Construction Management, QA QC, EH&S



Site Name: Burns & McDonnell - Various
Size: Construction Management, Startup Leads
Centerline Erection, Craft Superintendents



www.proenergyservices.com

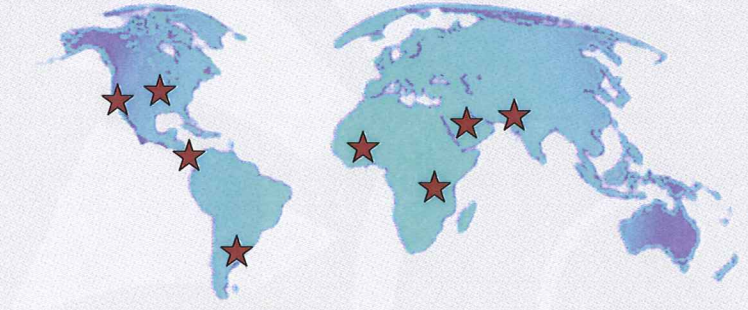
Operations & Maintenance

- Because of OUR on-site experience, we fully understand the elements of plant operation and asset management that are important to our clients.
- O&M Offerings
 - Short or long term O&M agreements
 - Asset management
 - Peak seasonal staffing
 - Remote Operations
 - Complete care, custody & control



www.proenergyservices.com

Operating over 5,000 MW worldwide



www.proenergyservices.com

Ameren UE



Site Name: Kinmundy Power Plant
Location: Patoka, Illinois
Size: 234 MW
Technology: Siemens/Westinghouse 2x501D5A



Site Name: Audrain County Power Plant
Location: Vandalia, Missouri
Size: 600 MW
Technology: GE 8x7EA



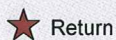
Site Name: Goose Creek Power Plant
Location: Monticello, Illinois
Size: 450 MW
Technology: GE 6x7EA



Site Name: Raccoon Creek Power Plant
Location: Flora, Illinois
Size: 300 MW
Technology: GE 4x7EA



Site Name: Pinckneyville Power Plant
Location: Pinckneyville, Illinois
Size: 320 MW
Technology: 4xLM6000, 4x6001B



www.proenergyservices.com

MMC



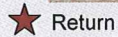
Site Name: Escondido
Location: Escondido, California
Size: 35 MW
Technology: P&W 2xFT4



Site Name: Chula Vista
Location: Chula Vista, California
Size: 35 MW
Technology: P&W 2xFT4



Site Name: MidSun
Location: Bakersfield, California
Size: 22 MW
Technology: LM2500



www.proenergyservices.com

SECO

Site Name: Sakaka
Location: Al Jouf, Saudi Arabia
Size: 30 MW
Technology: Caterpillar
15xXG2000

Site Name: Rafha
Location: Rafha, Saudi Arabia
Size: 12 MW

Site Name: Khaldeyah
Location: Arar, Saudi Arabia
Size: 14 MW

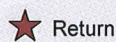
Site Name: Faisaleyah
Location: Arar, Saudi Arabia
Size: 14 MW

Site Name: Alkamasin
Location: Wadi Al Dawasir, Saudi Arabia
Size: 16 MW

Site Name: Hudaib
Location: Saudi Arabia
Size: 8 MW

Site Name: Alshurafa
Location: Saudi Arabia
Size: 6 MW

Site Name: Turayf
Location: Saudi Arabia
Size: 12 MW



www.proenergyservices.com

Pakistan



Customer: Pakistan Power Resources
Site Name: Bhikhi Power Station
Location: Shiekhupura- Pakistan
Size: 130 MW
Technology: GE 2XLM6000PC,
1XLM6000PD

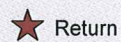


www.proenergyservices.com

Ghana

Being Installed

Site Name: Newmont Ghana Gold Limited
Location: Ghana, Africa
Size: 100 MW
Technology: P&W 4xFT4



www.proenergyservices.com

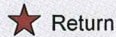
Tanzania



Site Name: A
Location: Tanzania, Africa
Size: 115 MW
Technology: 3xTM2500, 1xLM6000



Site Name: B
Location: Tanzania, Africa
Size: 23 MW
Technology: 1xTM2500



Return

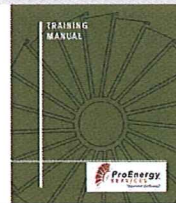
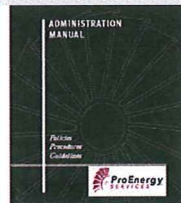
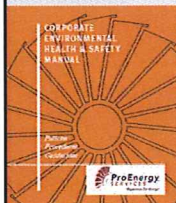


www.proenergyservices.com

Operations & Maintenance

Our O&M Manuals provides standard implementation of all site specific plant policies and procedures such as:

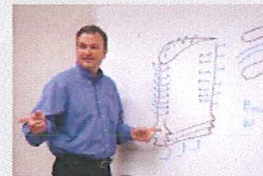
- Administration
- Environmental, Health & Safety
- Operation
- Training
- Maintenance



www.proenergyservices.com

Tech Services

- OUR Technical Services Division works as a team to provide the best service form all of OUR business lines. Technical Services performs mobilization services and plant start-ups on new and transitioning assets. We develop operation and maintenance procedures and implement computerized maintenance management systems.
- Technical Services helps OUR clients' facilities through reliability assessments, condition assessments, predictive maintenance, testing, application engineering, value engineering, and cost estimating.
 - Start-up and Commissioning
 - Classroom and OJT Training
 - Procedure Development
 - CMMS Implementation
 - Predictive Maintenance Services
 - Mobilization Services
 - Third Party Audits / Due Diligence



www.proenergyservices.com

Training, Procedure Development & CMMS Implementation Experience

TOSHIBA

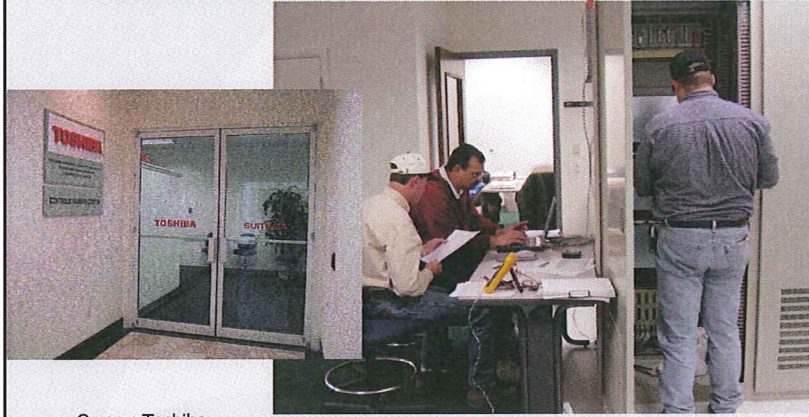


**JOHNSON
CONTROLS**

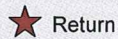


www.proenergyservices.com

Technical Services Experience



Owner: Toshiba
 Site Name: Various
 Location: USA (44), Mexico (1), Italy (3), Egypt (2)
 Scope: Site Training, Advance Controls, Advance Operations
 Technology: STG

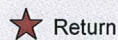


www.proenergyservices.com

Technical Services Experience

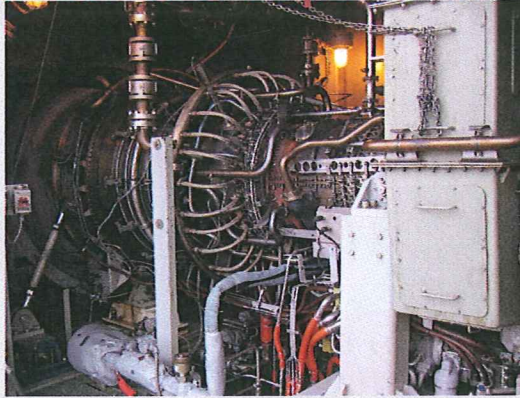


Owner: Xcel
 Site Name: Angus Anson and Blue Lake
 Location: Angus Anson, SD and Blue Lake, SD
 Scope: CMMS Implementation, Operating Procedures, Training
 Technology: GE 7FA

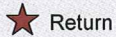


www.proenergyservices.com

Technical Services Experience



Owner: PSEG
Site Name: Burlington, Kearny, Linden, Essex
Location: New Jersey
Scope: CMMS Implementation, Operating Procedures
Technology: GE 7EA and GE LM6000

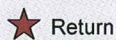


www.proenergyservices.com

Technical Services Experience



Owner: SDG&E
Site Name: Mira Mar
Location: San Diego
Scope: CMMS Implementation, Operating Procedures
Technology: GE LM6000



www.proenergyservices.com

Select Start-up and Commissioning Experience

- Hess MicroGen – 28 Combine Heat and Power Projects
- Mirant – Sugar Creek 2x7FA GTG with GE D-11 STG
- Sterling Energy – TermoMexicali 2x7FA, Alstom STG
- MMC- Chula Vista and Escondido 4xFT4
- Tanzania – Site A 3xTM2500 & 1xLM6000PD; Site B 1xTM2500
- Kinder Morgan – 2xLM6000PC with TurboDyne STG
- Calpine – Valladolid 2x7FA GTG with Toshiba STG
- Calpine – Turlock Power 2xLM6000PC
- Desert Power – 2x6B GTG
- Nour Communications – 9 Sites Diesel Package Units
- Black Hills – WyGen 2 Coal Plant



www.proenergyservices.com

Field Services

- OUR Field Services Team is dedicated to providing on site outage maintenance across most OEM gas turbine, steam turbine, generators and HRSGs.
 - General Electric: Frame 3, 5, 6, 7, & 9
 - Westinghouse: 191, 251, 301, and 501
 - Siemens: V84 & V94
 - ABB: Type 10, 11 and 24 models
 - All Steam Turbine Technologies
 - All Generator Technologies
 - All Boiler/HRSG Technologies
 - Controls Installation, Support, Trouble Shooting and Testing
 - Planned and Unplanned Maintenance Response



www.proenergyservices.com

Field Services Maintenance

A solid maintenance program is the key to the reliability of your equipment.

- Combustion Inspections
- Hot Gas Path Inspections
- Major Inspections
- Borescope Inspections
- I&C System Calibration
- DLN Tuning
- Craft Labor Support
- Balance Of Plant (BOP) Maintenance
- Pre and Post Peak Season Inspections
- Electrical Testing



•24 hrs/day 7 days/week world wide rapid response

•Domestic and International Workforce

•OEM Trained TFAs

•National Board R, S, U Stamp Certified

•Licensed Contractor



www.proenergyservices.com

Select Maintenance Experience



Project: Eastman Cogen
Scope: Turnkey 2 x 7FA Hot Gas Path



Project: Gila Bend
Scope: Turnkey 8 x 7FA Combustion Inspection



Project: City Power Plant
Scope: Turnkey 2 x Westinghouse STG Major Inspection



Project: Marshall Utilities
Scope: GE STG Major Inspection, Westinghouse 191 GTG



www.proenergyservices.com

Select Maintenance Experience

- ★ Eastman Cogen – Turnkey 2 x 7FA Hot Gas Path
- ★ TECO – Turnkey 2 x 7FA Combustion Inspection
- ★ LG&E – Turnkey 7EA Combustion Inspection
- ★ City of Columbia – Turnkey 2 x Westinghouse STG Major Inspection
- ★ Mobile Energy Center – Turnkey removal of STG and Condenser
- ★ Marshall Utilities
 - Technical Direction, GE STG Major Inspection
 - Technical Direction, Westinghouse 191 GTG
- ★ Ameren – Turnkey GE 6B, LM6000, Westinghouse 501F and 501D5A
- ★ Grace Power – Project Manager, Westinghouse STG
- ★ FP&L – Turnkey 7B Major Inspection



www.proenergyservices.com

Maintenance Experience



Owner: Eastman
Site Name: Eastman Cogen
Project: Turnkey 2 x 7FA Hot Gas Path
Provided: Project Management, Supervision, Craft

- ★ Return



www.proenergyservices.com

Maintenance Experience

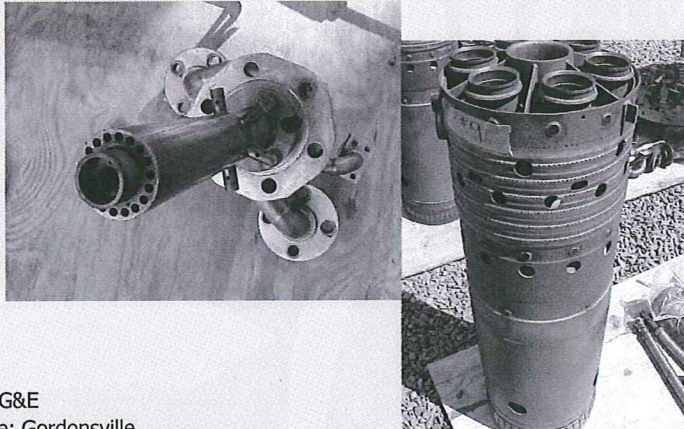


Owner: Teco
Site Name: Gila Bend
Project: Turnkey 8 x 7FA Combustion Inspection
Provided: Project Management, Supervision, Craft

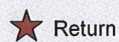


www.proenergyservices.com

Maintenance Experience

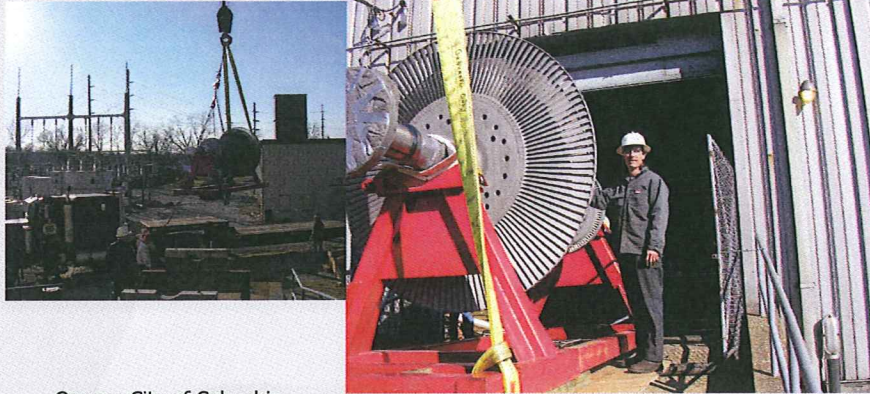


Owner: LG&E
Site Name: Gordonsville
Project: Turnkey 7EA Combustion Inspection
Provided: Project Management, Supervision, Craft

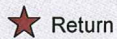


www.proenergyservices.com

Maintenance Experience

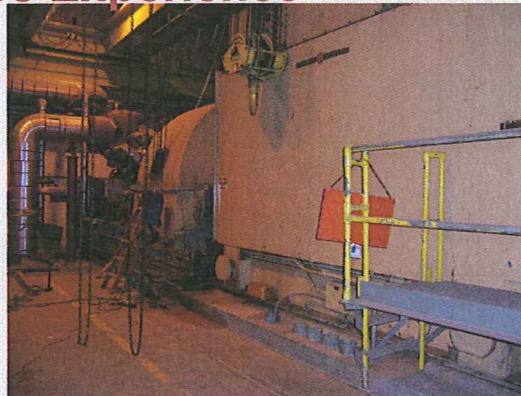


Owner: City of Columbia
Site Name: City Power Plant
Project: Turnkey 2 x Westinghouse STG Major Inspection
Provided: Project Management, Supervision, Craft

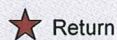


www.proenergyservices.com

Maintenance Experience



Owner: DTE Energy
Site Name: Mobile Energy Center
Project: Turnkey Removal of STG and Condenser
Provided: Project Management, Supervision, Craft



www.proenergyservices.com

Maintenance Experience



Owner: Marshall Utilities

Site Name: Marshall Power Plant

Provided:

- Technical Direction, GE STG Major Inspection
- Technical Direction, Westinghouse 191 GTG

★ Return



www.proenergyservices.com

Maintenance Experience



Owner: Johnston Controls

Site Name: Grace Power

Project: Westinghouse STG Major

Provided: Project Management, Supervision, Craft

★ Return



www.proenergyservices.com

Maintenance Experience

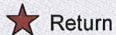


Owner: Ameren

Site Name: Pinckneyville

Project: Turnkey GE 6B, LM6000, Westinghouse 501F and 501D5A

Provided: Project Management, Supervision, Craft

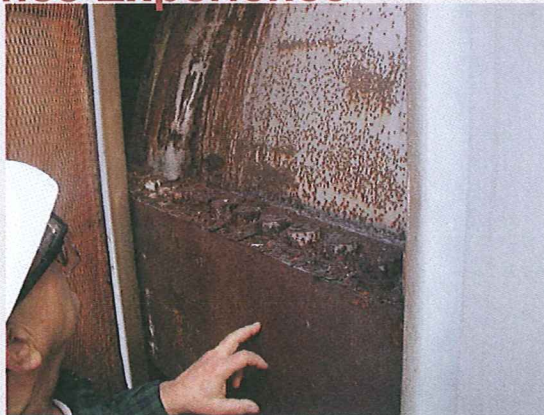


Return



www.proenergyservices.com

Maintenance Experience

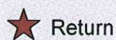


Owner: FP&L

Site Name: Fort Myers

Project: Turnkey 7B Major Inspection

Provided: Project Management, Supervision, Craft



Return



www.proenergyservices.com

EPC Services

- OUR EPC Services Team is dedicated to providing turnkey installation services from simple cycle gas turbine projects to combined cycle, or turnkey coal fired projects.

General Electric:

- LM models 48 installed units
- Frame models 28 installed units

Siemens Westinghouse:

- Industrial units 12 installed units

Pratt and Whitney

- FT4 A&C 16 installed units MobilPacs, PowerPacs, TwinPacs
- FT8 10 installed PowerPacs, TwinPacs

Hess MicroGen

- Combined Power and Heat Plants 48 installed units



www.proenergyservices.com

ProEnergy EPC Services

- Our services range from initial feasibility studies through preparation of detailed equipment specifications and procurement to the supervision of installation, start-up and commissioning



www.proenergyservices.com

Installed LM Projects

Location	Units
• Honduras	1
• Tucamon Argentina	4
• City of Burbank	1
• Benicia, Ca	1
• Baconton, Ga	6
• Pribeneow Columbia	3
• Ponca City, OK	1
• Okla City, OK	2
• Hazelton, Penn	3
• Gates Ca	2
• Fiumesanto, Italy	2
• Yuca, Az	2
• Kingman, Az	2
• Alberto, Ca	1
• Houston, Tx	1
• New Zealand	1
• Tanzania	5



www.proenergyservices.com

Select Installation Projects



Project: Mason City
Technology: 2x7FA with GE D-11 STG
Scope: CM for STG Centerline Erection, Training, Operating Procedures, Craft Superintendents



Project: Astoria Energy Center
Technology: 2x7FA GTG with Alstom STG
Scope: Project Management for Centerline Erection



Project: Snyder Power Plant
Technology: 2xLM6000 with TurboDyne STG
Scope: Technical Direction for Centerline Erection, Mobilization and Start-up



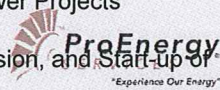
Project: 28 Sites
Technology: Combined Heat and Power Projects
Scope: Startup, CMMS Implementation, Training, Operating Procedures



www.proenergyservices.com

Select Installation Experience

- ★ PacificRim Energy - 4 sites (Cabrutica, Josefa Camejo, Alta Gracia, Puerta La Cruz) 501F CTG: Procure, Install, Commission, and Start-up
- ★ Mirant – Sugar Creek 2x7FA GTG with GE D-11 STG: Project Management, Supervision, Craft Labor, and Tools for Construction, Commissioning & S/U.
- ★ Tenaska – Fluvanna County 3x7FA with GE D-11 STG: Project Management for Centerline Erection
- ★ Astoria Energy 2x7FA GTG with Alstom STG: Project Management for Centerline Erection
- ★ Kinder Morgan – 2xLM6000 with TurboDyne STG: Technical Direction for Centerline Erection, Mobilization and Start-up
- ★ Hess MicroGen – 28 sites: Install Combined Heat and Power Projects
- ★ Nour Communications – 9 Sites: Procure, Install, Commission, and Start-up of Diesel Package Units



www.proenergyservices.com

Installation Experience



Owner: Tenaska
Site Name: Fluvanna County
Technology: 3x7FA with GE D-11 STG
Provided: Project Management for Centerline Erection

- ★ Return

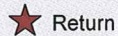


www.proenergyservices.com

Installation Experience

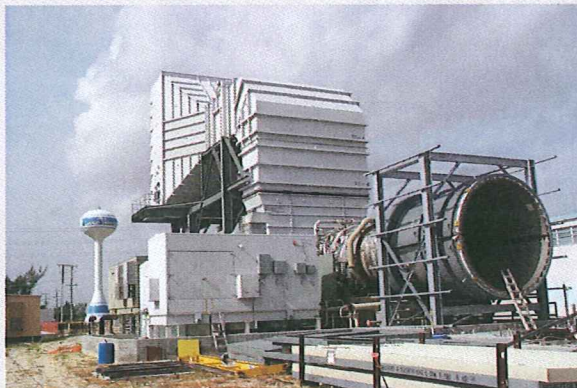


Owner: Alliant
Site Name: Mason City
Technology: 2x7FA with GE D-11 STG
Provided: CM for STG Centerline Erection, Training, Operating Procedures, Craft Superintendents

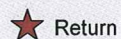


www.proenergyservices.com

Installation Experience



Owner: Mirant
Site Name: Sugar Creek
Technology: 2x7FA GTG with GE D-11 STG
Provided: Project Management, Supervision, Craft Labor, and Tools for Construction, Commissioning & Start Up

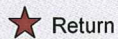


www.proenergyservices.com

Installation Experience



Owner: Astoria Energy LLC
Site Name: Astoria Energy Center
Technology: 2x7FA GTG with Alstom STG
Provided: Project Management for Centerline Erection

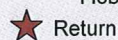


www.proenergyservices.com

Installation Experience



Owner: Kinder Morgan
Site Name: Snyder Power Plant
Technology: 2xLM6000 with TurboDyne STG
Provided: Technical Direction for Centerline Erection,
Mobilization and Start-up

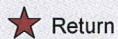


www.proenergyservices.com

Installation Experience



Owner: Hess MicroGen
Site Name: 28 Sites
Technology: Combined Heat and Power Projects
Provided: Project Management, Supervision, Craft

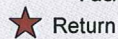


www.proenergyservices.com

Installation Experience



Owner: Nour
Site Name: 9 Sites
Technology: XQ2000 Reciprocating Engines
Provided: Procure, Install, Commission, and Start-up of Diesel Package Units



www.proenergyservices.com

Process Services

- Process Services Group provides individual and packaged services to execute projects for industrial customers around the world. ProEnergy provides a wide range of services to install, modify, relocate, operate, and maintain assets for Industrial Customers in manufacturing, food processing, fuel refining, material handling, water treatment, and chemical / petroleum refining processes.
 - Paper and paper products
 - Food processing, handling, and storage
 - Refining and processing of chemicals, minerals, and petroleum
 - Manufacturing of equipment, and sub assemblies
 - Material handling / sorting
 - Water treatment



www.proenergyservices.com

Fabrication Services

ProEnergy manufactures, retrofits, installs and tests a variety of steel products used in construction, operation and maintenance for industrial customers in manufacturing, food processing, fuel refining, material handling, water treatment, and chemical/petroleum refining processes.

- Independent Third Party Destructive and Non-Destructive Testing
- Welding
- Pipe Fabrication and Installation
- Installation of Control Devices
- Fabrication of Code Vessels
- Certifications and Professional Registrations
- Pursuing ISO 9001.2000 Certification by 2008
- Code Stamps, (R,S & U)
- Commitment to QA/QC



www.proenergyservices.com

Fabrication Services

Equipment Capabilities

- **High Definition plasma table 12'x35' cutting deck** — Capabilities to cut up to 1 1/2" plate with High Definition and up to 6" plate with oxy-fuel, driven by CNC Computer system
- **250 ton x 12' brake press** — Capabilities to Brake up to 3/8" steel at 12' wide
- **12' plate shear** — Capabilities to shear up to 3/8" steel plate 12' wide
- **HYD-MECH bundle cut band saw with Mitering capabilities** — Capable to cut bundle quantities of steel with our without Mitered ends handling bundle sizes up to 20"x30" at the jaws and lengths up to 40'
- **10' hydraulic plate roll with capabilities to roll up to 1 1/2" plate** — Capable to roll up to 1 1/2" plate to 6' Diameter with one seam



www.proenergyservices.com

Fabrication Services

Welding

- Alloy Welding
- Mechanical
- Pipe Welding
- Structural Steel Welding
- Duct Work
- Mobile welding rigs for field work
- Stainless Steel

Cutting

- Plasma cutting custom parts
- Custom Shearing
- Custom Bundle cut structural items with or without compound Miter

Metal Building and Shaping

- Custom metal bracing
- Custom Rolled plate steel
- Custom bent steps and pans
- Full service job shop capabilities

Qualified Welding Procedures for the following Processes:

- Stainless and Mild Carbon Steel
- Custom metal bracing
- Custom Rolled plate steel
- Custom bent steps and pans



www.proenergyservices.com

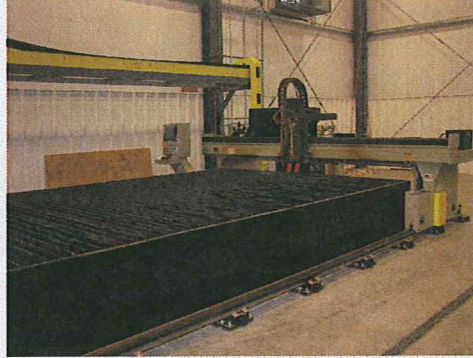
Fabrication Services

Independent Third Party Destructive and Non-Destructive Testing

- RT Radiography Testing
- MT Magnetic Particle Testing
- PT Liquid Penetrate Testing
- UT Ultrasonic Testing
- VT Visual Testing
- PMI Positive Material Identification
- ET Electromagnetic Testing
- NRT Neutron Radiographic Testing
- VA Vibration Analysis Testing
- LTM Laser Testing Methods

Pipe Fabrication and Installation

- ASME B31.1 Power Piping
- ASME B31.3 Process Piping
- ASME B31.5 Refrigeration Piping
- ASME B31.8 Gas Transmission & Distribution Piping
- ASME B31.9 Building Services
- ASME STS-1 Steel Stacks



www.proenergyservices.com

Energy Parts Solutions

- Energy Parts Solutions is a global provider of parts and equipment for power plants and industry. EPS supplies parts for Siemens Westinghouse, Pratt & Whitney and GE engine lines.
- EPS knows the energy business so we understand that when you need a part, you need it now, and we deliver, twenty-four hours a day, seven days a week.
- Because we deal directly with manufacturers, our prices are competitive and our supply line is secure. Contact us for fast quotes and fast delivery.



www.proenergyservices.com

Select 7EA Projects

Installation

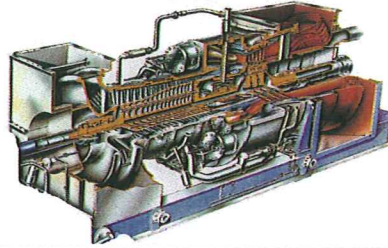
Client	Location	Units
• AEP	Mattson	4
• AEP	Riverside	4
• AEP	Southwestern	2
• East Texas Electric	ET1 Site	2
• East Texas Electric	ET2 Site	2
• El Paso Electric	Newman Site	2

O&M

Client	Location	Units
• Ameren	Vandalia, Missouri	8
• Ameren	Flora, Illinois	4
• Ameren	Monticello, Illinois	6
• TermoColon	Panama	2
• Enron	Puerto Plata	1
• CSW Energy	Bartow, FL	1

Maintenance

Client	Scope	Units
• LG&E	Combustion Inspection	1
• FPL	Major Inspection	1
• TVA	Combustion Inspection	2
• Duke	Hot Gas Path Inspection	3
• Cal Energy	Combustion Inspection	1
• Arkansas Electric	Borescope	1
• PSEG	CMMS	5



www.proenergyservices.com

LTSA Offering

- Parts, Services and Repairs are already paid for through the customer's payment of the LTSA Fees.
 - Parts
 - Energy Parts Solutions
 - Buyers
 - Logistics
 - Warehouse
 - Repairs
 - In House – IGT Service Shop
 - Liburdi
 - Sulzer Hickham
 - Trinity Turbine Technology
 - TurboCare
 - Services
 - LTSA Director (Focus on the project, walking repairs through, and reporting)
 - Field Services (CI, HGP, MI)
 - T/As
 - Foreman
 - Millwrights



www.proenergyservices.com

LTSA Offering

- We will stand up to our guarantee.
 - Heat Rate
 - Parts Life
 - Repair Cycles
 - Workmanship
- Service Experience
 - Start Up and Commissioning Services: Over 50 Projects World Wide
 - Operations Support: Over 96 Projects World Wide
 - Maintenance Services: Over 359 Events
 - Field Technical Advisors: 22 Full Time
 - LTSA Agreements: (8) 501F, (3) 9E, (2) 7E, (3) LM6000
 - Operations and Management of 31 power generation facilities, including GE, Westinghouse, and Pratt & Whitney machines.



www.proenergyservices.com

ProEnergy Services Goals

We Align OUR Goals with your Goals

- ❑ Owner's return on investment
- ❑ Plant availability and performance
- ❑ Life cycle and duration of assets
- ❑ Management of budgets and cost control
- ❑ Environmental, health and safety
- ❑ Overall project success



www.proenergyservices.com